

BAND-IT

THE ULTIMATE FASTENING SYSTEMS

BALL-LOK TIES FROM BAND-IT

These ties are quick and easy to apply offering a versatile solution for cable management, hose sleeve attachment, and other medium duty applications. The self-locking buckle offers superior corrosive, abrasive and UV resistance performance that makes this product perfect for harsh or marine environments. The smooth inside diameter of the KE ties further reduces the potential for damage to cabling or shielding during the tensioning process.

PRODUCT FEATURES

- Manufactured in BAND-IT global sites and UL Certified.
- Available in both 304 and 316 Stainless Steel to provide good to excellent corrosion resistance in a wide variety of environments.

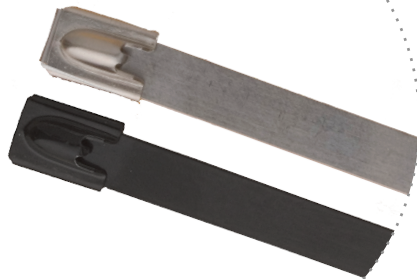
KE PREMIUM TIES

- Higher loop tensile strength
- Available uncoated or coated with 100% black Epoxy
- Smooth inner diameter design

KT STANDARD TIES

- Available uncoated or coated with 30% Polyester and 70% Epoxy
- Fold over design

Certified By:



Coated and Uncoated KT Ties

INSTALLATION TOOLS

Both ties can be installed by hand or with tools to assure uniform tension and clean tail cut-off for safe handling. The two hand tools recommended for this application manually tension and cut-off the tail of the band and can be used on coated or uncoated ties.

K50289

For use with ties up to 7.8mm width, even if epoxy coated. The adjustable tension control assures consistent tension of ties with a smooth tail cut off.

XE9229 / KE9229

Tensions and cuts off ties up to 12mm wide regardless of material or coating.



BAND-IT
IDEX

©2021 BAND-IT IDEX. All Rights Reserved. B-725 4/2021

www.band-it-idex.com

Toll Free: 800.525.0758 / 303.320.4555

+44 (0) 1246 479479

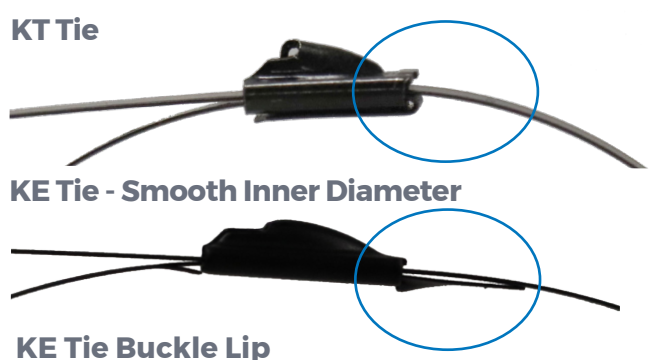
KE PREMIUM TIES



304 SS Uncoated Material	316 SS Uncoated Material	Width		Length		Base Material Thickness		Maximum Bundle Diameter		Minimum Loop Tensile Strength (Lbs)	Package Quantity	Application Tools
		In	mm	In	mm	In	mm	In	mm			
KE1118	KE0118	0.18	4.6	5.9	150	0.010	0.25	1.2	30	200	100/Bag	K50289 XE9229 KE9229 or by hand
KE1128	KE0128	0.18	4.6	7.9	201	0.010	0.25	2.0	50	200	100/Bag	
KE1138	KE0138	0.18	4.6	10.2	259	0.010	0.25	2.7	69	200	100/Bag	
KE1148	KE0148	0.18	4.6	14.2	360	0.010	0.25	4.0	102	200	100/Bag	
KE1158	KE0158	0.18	4.6	20.4	520	0.010	0.25	6.0	152	200	100/Bag	
KE1168	KE0168	0.18	4.6	26.8	679	0.010	0.25	8.0	203	200	100/Bag	
KE1178	KE0178	0.18	4.6	33.0	838	0.010	0.25	10.0	254	200	100/Bag	
KE1188	KE0188	0.18	4.6	42.0	1067	0.010	0.25	12.0	305	200	100/Bag	
KE1328	KE0328	0.31	7.9	7.9	201	0.010	0.25	2.0	50	300	100/Bag	
KE1338	KE0338	0.31	7.9	10.2	259	0.010	0.25	2.7	69	300	100/Bag	
KE1348	KE0348	0.31	7.9	14.2	360	0.010	0.25	4.0	102	300	100/Bag	
KE1358	KE0358	0.31	7.9	20.4	520	0.010	0.25	6.0	152	300	100/Bag	
KE1368	KE0368	0.31	7.9	26.8	679	0.010	0.25	8.0	203	300	100/Bag	
KE1378	KE0378	0.31	7.9	33.0	838	0.010	0.25	10.0	254	300	100/Bag	
KE1388	KE0388	0.31	7.9	42.0	1067	0.010	0.25	12.0	305	300	100/Bag	
316 SS Coated Material (Epoxy)												
KE0228		0.18	4.6	7.9	201	0.010	0.25	2.0	50	150	100/Bag	
KE0238		0.18	4.6	10.2	259	0.010	0.25	2.7	69	150	100/Bag	
KE0248		0.18	4.6	14.2	360	0.010	0.25	4.0	102	150	100/Bag	
KE0258		0.18	4.6	20.4	520	0.010	0.25	6.0	152	150	100/Bag	
KE0268		0.18	4.6	26.8	679	0.010	0.25	8.0	203	150	100/Bag	
KE0278		0.18	4.6	33.0	838	0.010	0.25	10.0	254	150	100/Bag	
KE0428		0.31	7.9	7.9	201	0.010	0.25	2.0	50	175	100/Bag	
KE0438		0.31	7.9	10.2	259	0.010	0.25	2.7	69	175	100/Bag	
KE0448		0.31	7.9	14.2	360	0.010	0.25	4.0	102	175	100/Bag	
KE0458		0.31	7.9	20.4	520	0.010	0.25	6.0	152	175	100/Bag	
KE0468		0.31	7.9	26.8	679	0.010	0.25	8.0	203	175	100/Bag	
KE0478		0.31	7.9	33.0	838	0.010	0.25	10.0	254	175	100/Bag	

Premium KE ties provide a longer life than nylon ties, especially in extreme climates. The KE ties also have a stronger loop tensile strength than the KT ties.

Available in 100% Epoxy coating to reduce the risk of cutting or abrading cable insulation or hose coverings.



- Further reduces potential for scoring or damaging cable during tensioning
- Improves inserting band into the buckle during installation

KT STANDARD TIES - UNCOATED



304 SS Uncoated Material	316 SS Uncoated Material	Width		Length		Base Material Thickness		Maximum Bundle Diameter		Minimum Loop Tensile Strength (Lbs)	Package Quantity	Application Tools
		In	mm	In	mm	In	mm	In	mm			
KT4U046-010	KT6U046-010	0.18	4.6	3.9	100	0.010	0.25	0.7	19	190	100	K50289 XE9229 KE9229 or by hand
KT4U046-015	KT6U046-015	0.18	4.6	5.9	150	0.010	0.25	1.4	35	190	100	
KT4U046-020	KT6U046-020	0.18	4.6	7.9	200	0.010	0.25	2.0	52	190	100	
KT4U046-025	KT6U046-025	0.18	4.6	9.8	250	0.010	0.25	2.6	67	190	100	
KT4U046-030	KT6U046-030	0.18	4.6	11.8	300	0.010	0.25	3.3	83	190	100	
KT4U046-035	KT6U046-035	0.18	4.6	13.8	350	0.010	0.25	3.9	99	190	100	
KT4U046-040	KT6U046-040	0.18	4.6	15.7	400	0.010	0.25	4.5	115	190	100	
KT4U046-045	KT6U046-045	0.18	4.6	17.7	450	0.010	0.25	5.2	131	190	100	
KT4U046-050	KT6U046-050	0.18	4.6	19.7	500	0.010	0.25	5.8	147	190	100	
KT4U046-055	KT6U046-055	0.18	4.6	21.6	550	0.010	0.25	6.4	163	190	100	
KT4U046-060	KT6U046-060	0.18	4.6	23.6	600	0.010	0.25	7.0	179	190	100	
KT4U046-065	KT6U046-065	0.18	4.6	25.6	650	0.010	0.25	7.6	194	190	100	
KT4U046-070	KT6U046-070	0.18	4.6	27.6	700	0.010	0.25	8.3	211	190	100	
KT4U046-080	KT6U046-080	0.18	4.6	31.4	800	0.010	0.25	9.5	242	190	100	
KT4U046-090	KT6U046-090	0.18	4.6	35.4	900	0.010	0.25	10.8	274	190	100	
KT4U046-100	KT6U046-100	0.18	4.6	39.4	1000	0.010	0.25	12.0	306	190	100	
KT4U046-110	KT6U046-110	0.18	4.6	43.3	1100	0.010	0.25	13.3	338	190	100	
KT4U046-120	KT6U046-120	0.18	4.6	47.2	1200	0.010	0.25	14.5	369	190	100	
KT4U078-010	KT6U078-010	0.31	7.8	3.9	100	0.010	0.25	0.7	19	280	100	
KT4U078-015	KT6U078-015	0.31	7.8	5.9	150	0.010	0.25	1.4	35	280	100	
KT4U078-020	KT6U078-020	0.31	7.8	7.9	200	0.010	0.25	2.0	52	280	100	
KT4U078-025	KT6U078-025	0.31	7.8	9.8	250	0.010	0.25	2.6	67	280	100	
KT4U078-030	KT6U078-030	0.31	7.8	11.8	300	0.010	0.25	3.3	83	280	100	
KT4U078-035	KT6U078-035	0.31	7.8	13.8	350	0.010	0.25	3.9	99	280	100	
KT4U078-040	KT6U078-040	0.31	7.8	15.7	400	0.010	0.25	4.5	115	280	100	
KT4U078-045	KT6U078-045	0.31	7.8	17.7	450	0.010	0.25	5.1	131	280	100	
KT4U078-050	KT6U078-050	0.31	7.8	19.7	500	0.010	0.25	5.8	147	280	100	
KT4U078-055	KT6U078-055	0.31	7.8	21.6	550	0.010	0.25	6.4	163	280	100	
KT4U078-060	KT6U078-060	0.31	7.8	23.6	600	0.010	0.25	7.0	179	280	100	
KT4U078-065	KT6U078-065	0.31	7.8	25.6	650	0.010	0.25	7.6	194	280	100	
KT4U078-070	KT6U078-070	0.31	7.8	27.6	700	0.010	0.25	8.3	211	280	100	
KT4U078-080	KT6U078-080	0.31	7.8	31.4	800	0.010	0.25	9.5	242	280	100	
KT4U078-090	KT6U078-090	0.31	7.8	35.4	900	0.010	0.25	10.8	274	280	100	
KT4U078-100	KT6U078-100	0.31	7.8	39.4	1000	0.010	0.25	12.0	306	280	100	
KT4U078-110	KT6U078-110	0.31	7.8	43.3	1100	0.010	0.25	13.3	338	280	100	
KT4U078-120	KT6U078-120	0.31	7.8	47.2	1200	0.010	0.25	14.5	369	280	100	
KT4U078-130	KT6U078-130	0.31	7.8	51.2	1300	0.010	0.25	15.8	401	280	100	
KT4U078-140	KT6U078-140	0.31	7.8	55.1	1400	0.010	0.25	17.1	433	280	100	
KT4U078-150	KT6U078-150	0.31	7.8	59.0	1500	0.010	0.25	18.3	465	280	100	

KT STANDARD TIES - COATED



304 SS Coated Material	316 SS Coated Material	Width		Length		Base Material Thickness		Maximum Bundle Diameter		Minimum Loop Tensile Strength (Lbs)	Package Quantity	Application Tools
		In	mm	In	mm	In	mm	In	mm			
KT4B046-010	KT6B046-010	0.18	4.6	3.9	100	0.010	0.25	0.7	19	140	100	K50289 XE9229 KE9229 or by hand
KT4B046-015	KT6B046-015	0.18	4.6	5.9	150	0.010	0.25	1.4	35	140	100	
KT4B046-020	KT6B046-020	0.18	4.6	7.9	200	0.010	0.25	2.0	52	140	100	
KT4B046-025	KT6B046-025	0.18	4.6	9.8	250	0.010	0.25	2.6	67	140	100	
KT4B046-030	KT6B046-030	0.18	4.6	11.8	300	0.010	0.25	3.3	83	140	100	
KT4B046-035	KT6B046-035	0.18	4.6	13.8	350	0.010	0.25	3.9	99	140	100	
KT4B046-040	KT6B046-040	0.18	4.6	15.7	400	0.010	0.25	4.5	115	140	100	
KT4B046-045	KT6B046-045	0.18	4.6	17.7	450	0.010	0.25	5.2	131	140	100	
KT4B046-050	KT6B046-050	0.18	4.6	19.7	500	0.010	0.25	5.8	147	140	100	
KT4B046-055	KT6B046-055	0.18	4.6	21.6	550	0.010	0.25	6.4	163	140	100	
KT4B046-060	KT6B046-060	0.18	4.6	23.6	600	0.010	0.25	7.0	179	140	100	
KT4B046-065	KT6B046-065	0.18	4.6	25.6	650	0.010	0.25	7.6	194	140	100	
KT4B046-070	KT6B046-070	0.18	4.6	27.6	700	0.010	0.25	8.3	211	140	100	
KT4B046-080	KT6B046-080	0.18	4.6	31.4	800	0.010	0.25	9.5	242	140	100	
KT4B046-090	KT6B046-090	0.18	4.6	35.4	900	0.010	0.25	10.8	274	140	100	
KT4B046-100	KT6B046-100	0.18	4.6	39.4	1000	0.010	0.25	12.0	306	140	100	
KT4B046-110	KT6B046-110	0.18	4.6	43.3	1100	0.010	0.25	13.3	338	140	100	
KT4B046-120	KT6B046-120	0.18	4.6	47.2	1200	0.010	0.25	14.5	369	140	100	
KT4B078-010	KT6B078-010	0.31	7.8	3.9	100	0.010	0.25	0.7	19	160	100	
KT4B078-015	KT6B078-015	0.31	7.8	5.9	150	0.010	0.25	1.4	35	160	100	
KT4B078-020	KT6B078-020	0.31	7.8	7.9	200	0.010	0.25	2.0	52	160	100	
KT4B078-025	KT6B078-025	0.31	7.8	9.8	250	0.010	0.25	2.6	67	160	100	
KT4B078-030	KT6B078-030	0.31	7.8	11.8	300	0.010	0.25	3.3	83	160	100	
KT4B078-035	KT6B078-035	0.31	7.8	13.8	350	0.010	0.25	3.9	99	160	100	
KT4B078-040	KT6B078-040	0.31	7.8	15.7	400	0.010	0.25	4.5	115	160	100	
KT4B078-045	KT6B078-045	0.31	7.8	17.7	450	0.010	0.25	5.1	131	160	100	
KT4B078-050	KT6B078-050	0.31	7.8	19.7	500	0.010	0.25	5.8	147	160	100	
KT4B078-055	KT6B078-055	0.31	7.8	21.6	550	0.010	0.25	6.4	163	160	100	
KT4B078-060	KT6B078-060	0.31	7.8	23.6	600	0.010	0.25	7.0	179	160	100	
KT4B078-065	KT6B078-065	0.31	7.8	25.6	650	0.010	0.25	7.6	194	160	100	
KT4B078-070	KT6B078-070	0.31	7.8	27.6	700	0.010	0.25	8.3	211	160	100	
KT4B078-080	KT6B078-080	0.31	7.8	31.4	800	0.010	0.25	9.5	242	160	100	
KT4B078-090	KT6B078-090	0.31	7.8	35.4	900	0.010	0.25	10.8	274	160	100	
KT4B078-100	KT6B078-100	0.31	7.8	39.4	1000	0.010	0.25	12.0	306	160	100	
KT4B078-110	KT6B078-110	0.31	7.8	43.3	1100	0.010	0.25	13.3	338	160	100	
KT4B078-120	KT6B078-120	0.31	7.8	47.2	1200	0.010	0.25	14.5	369	160	100	
KT4B078-130	KT6B078-130	0.31	7.8	51.2	1300	0.010	0.25	15.8	401	160	100	
KT4B078-140	KT6B078-140	0.31	7.8	55.1	1400	0.010	0.25	17.1	433	160	100	
KT4B078-150	KT6B078-150	0.31	7.8	59.0	1500	0.010	0.25	18.3	465	160	100	